



Soon to become

SAVE THE ELEPHANTS – SOUTH AFRICA

Tracking Animals for Conservation Elephant Tracking Report No. 19: February 2013

We bring you an update of the movements of 27 collared elephants in the Associated Private Nature Reserves (APNR), Kruger National Park (KNP) and the Limpopo Transfrontier Park in Mozambique (LTP).

The nine elephants collared within the Pafuri-Makuleke Concession of the Kruger National Park showed very interesting movements since the floods in January. With the Limpopo and Luvuvhu Rivers bursting their banks, all the collared elephants moved south away from the rivers. Colleen represents the first collared elephant that has started moving north, returning towards the rivers since the floods.

Within the central section of Kruger National Park; WESSA and Mighty Craic have continued to utilise the area between the Olifants and Letaba Rivers. Mac remains within the Shingwedzi area.

The majority of the sixteen elephants collared within the APNR have been consistent with their movements since our last report, with the exception of Charlize and Soshangane who have begun to utilise Jejane PNR which has recently been incorporated into the Associated Private Nature Reserves (APNR) over the past couple of months.

To help you understand the elephants and their movements the first position of the month is indicated with a diamond and the last position of the month is indicated with an elephant. Cows point to the left and bulls point to the right.

We hope you enjoy this latest report.

Save the Elephants – South Africa soon to become Elephants Alive

Report prepared by Amy Clark

P.O. Box 960 Hoedspruit 1380 Tel: +27 (0) 710063900

www.savetheelephants.org

HOSTED BY:



Save the Elephants – South Africa

STE are being supported by the SATIB Trust and their business hub Enviro-Africa Conservation Services on all our future news releases/letters.

SUPPORTED BY:



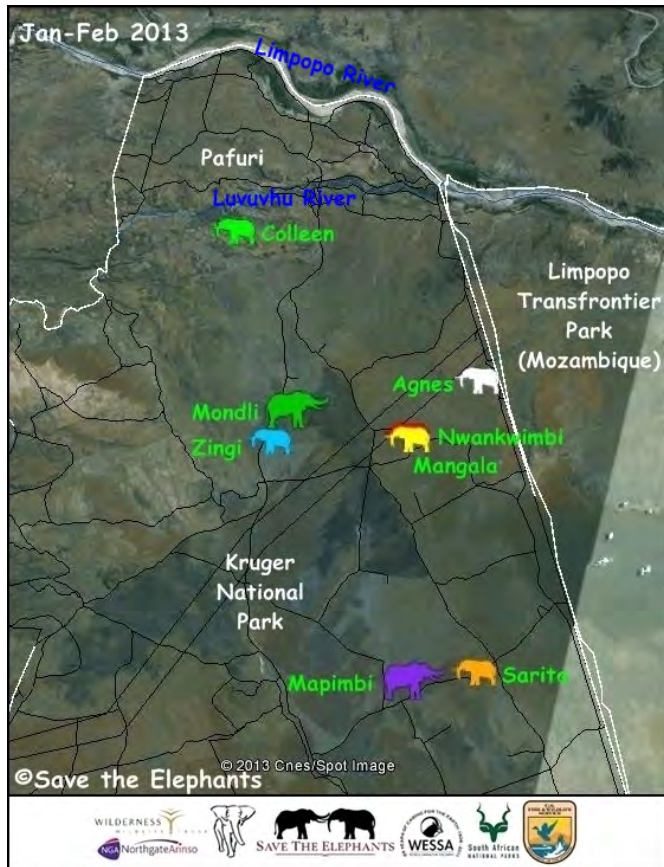
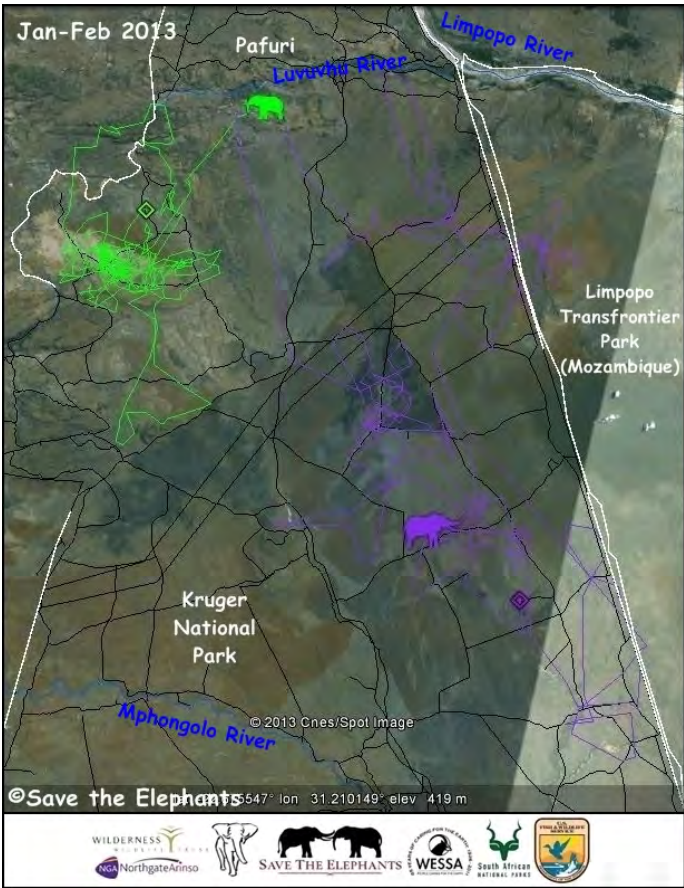


Figure 1: Positions of the Elephants in Northern Kruger National Park (Pafuri-Makuleke Concession)

Figure 2: Colleen (Light Green) & Mapimbi (Purple)

Colleen has started moving north again since the floods, whilst Mapimbi has continued to utilize the same area within Kruger National Park.



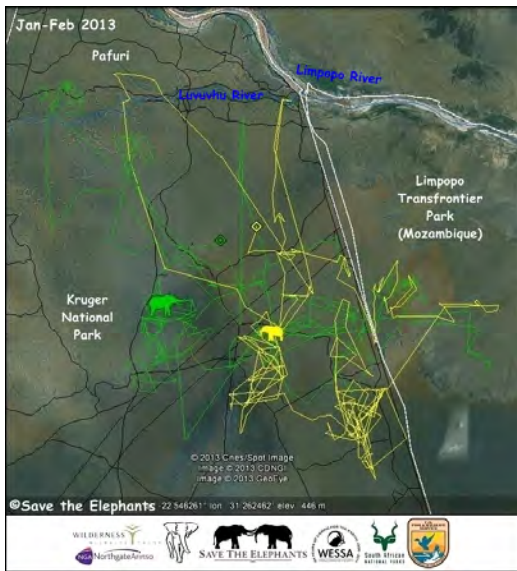


Figure 3: Mangala (Yellow) & Mondli (Green)

Both Mondli and Mangala spent a brief amount time in LNP (Mozambique) since the start of the year.

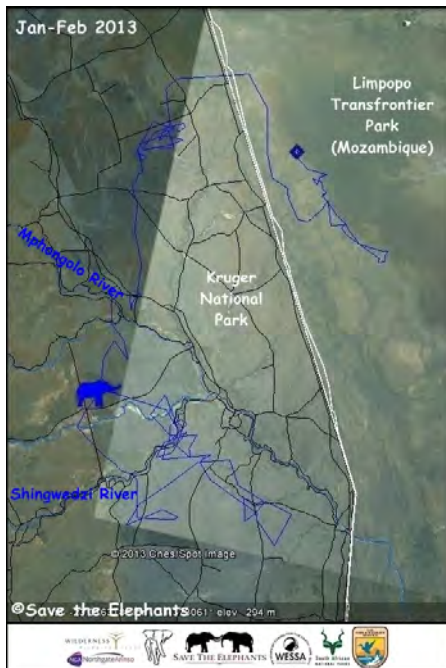


Figure 4: Nwambi

Nwambi left Mozambique heading south to the Shingwedzi area where he has spent the last month around the Shingwedzi River.

Figure 5: Sarita (Orange) & Nwankwimbi (Red)

Sarita and Nwankwimbi have spent time in the same areas since moving south after the floods.

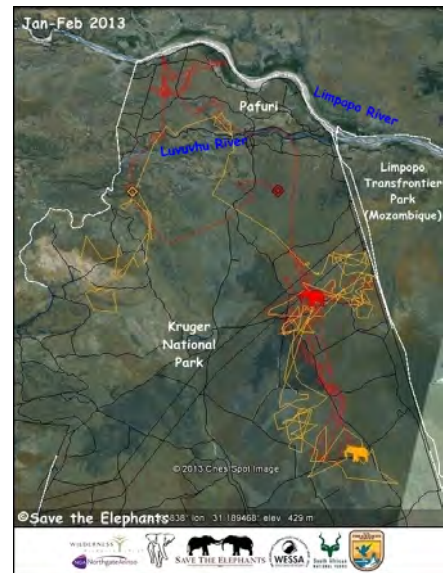


Figure 6: Zingi (Blue) & Agnes (White)

Zingi and Agnes have also been using the same areas over the last couple of months, crossing paths regularly.

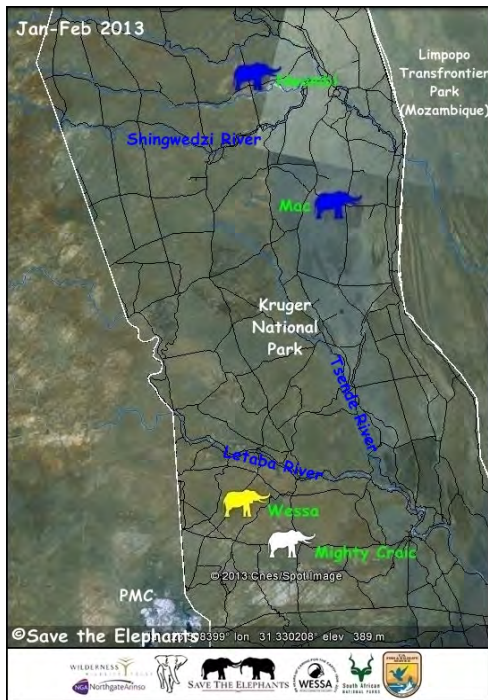


Figure 7: Positions of the Elephants in Central Kruger

Figure 8: Mac

Mac continues to utilize his area of choice within the Shingwedzi region.

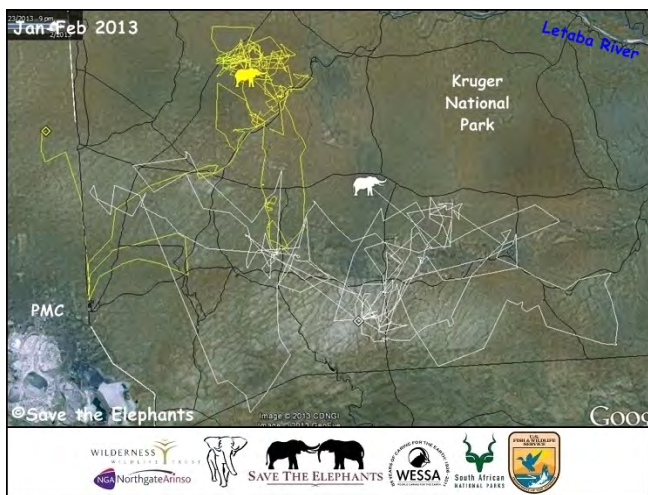
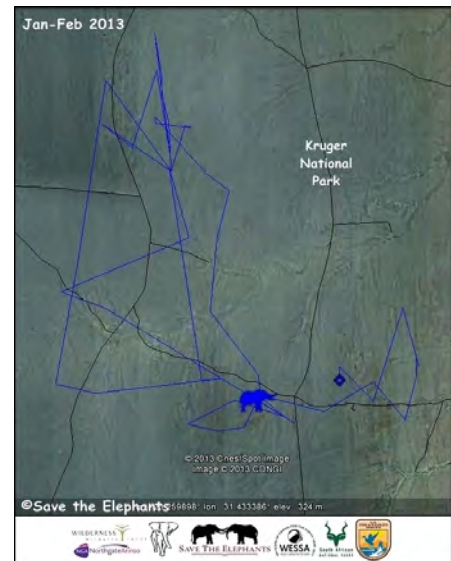


Figure 9: WESSA (Yellow) & Mighty Craic (White)

Wessa and Mighty Craic have remained north of Phalaborwa, however Mighty Craic has ventured a bit further east in the last couple of months.

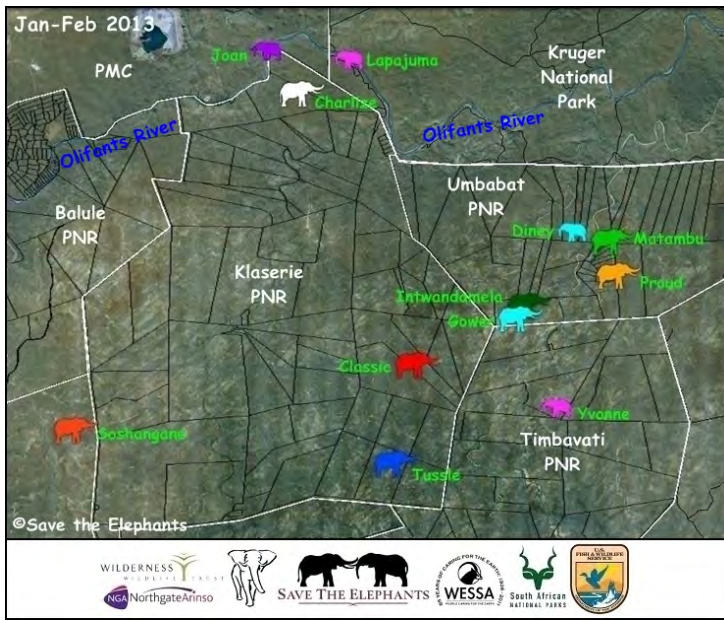


Figure 10: Positions of the Elephants in the APNR

Figure 11: Classic (Red) & Gower (Blue)

Classic and Gower have spent their time mainly within the Umbabat PNR with Classic starting his musth cycle at the end of February

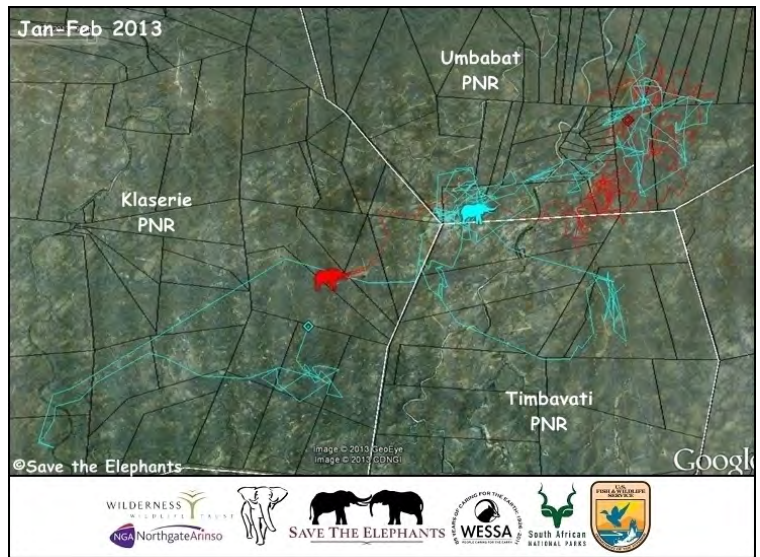




Figure 11: Diney (Blue) & Intwandamela (Green)

Intwandamela spent time north of the Olifants River since the beginning of the year, whilst Diney has moved south of the River and has spent the majority of her time in Umbabat PNR.

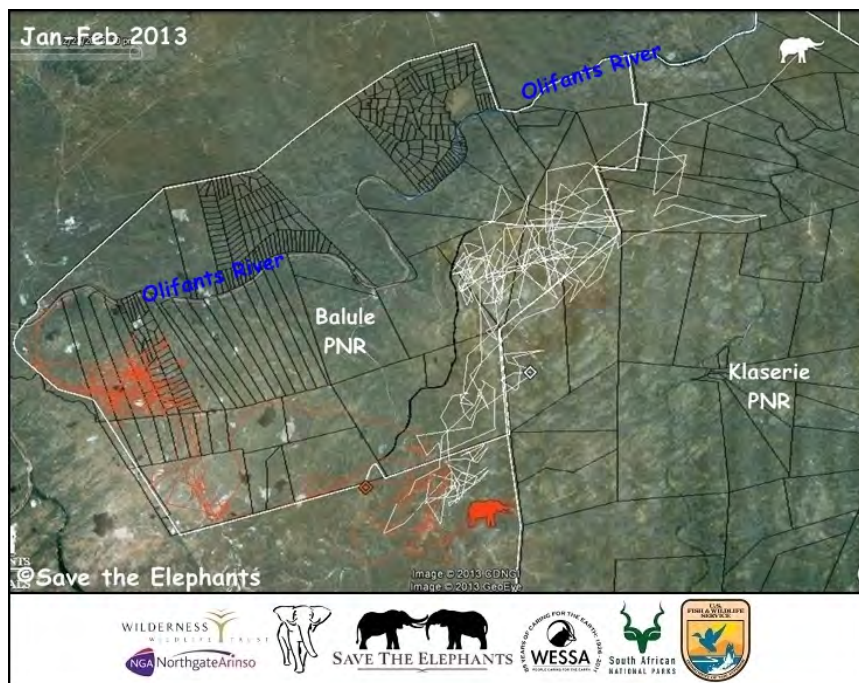


Figure 12: Soshangane (Orange) & Charlize (White)

Charlize has continued to move between the railway line in Balule and the Klaserie River, she has also utilized

Figure 13: Tussle

Tussle has covered a large area over the last two months using mainly Timbavati and Klaserie PNR.

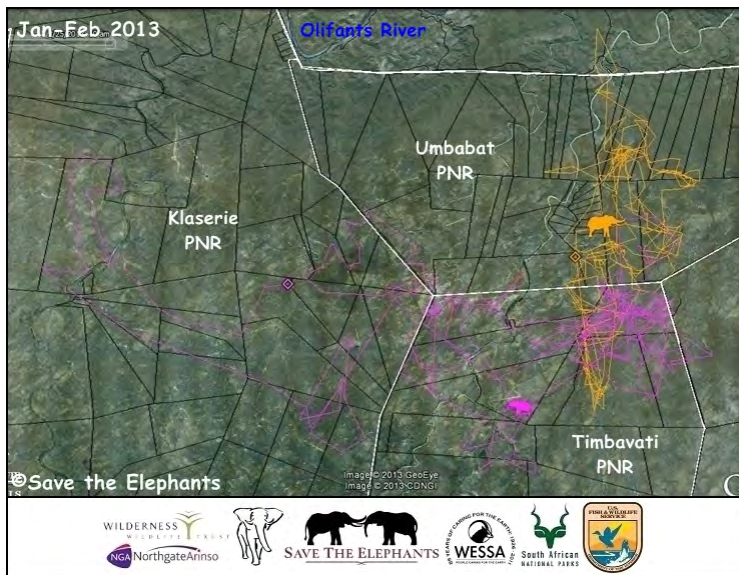
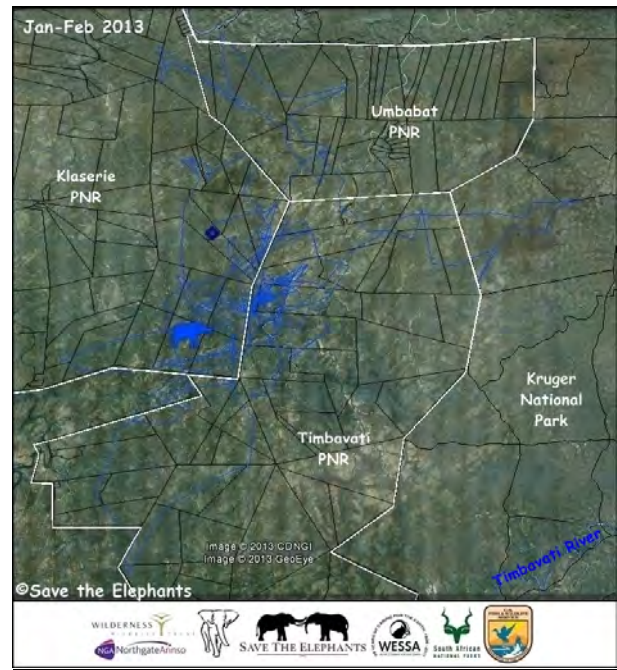


Figure 14: Proud (Orange) & Yvonne (Pink)

After leaving Klaserie PNR, Yvonne has spent the majority of her time within the northern section of Timbavati PNR. Proud's movements have been travelling from north to south with the Umbabat and Timbavati PNR.

A special word of thanks to the following individuals who have kindly donated collars:

Stefan Breuer — Jerry & Madeleine Cohen — Joubert De Lange — Phyllis Gower —
Martin & Sophie Haupt — Charlie Irish — Bruce Jenkins — Andreas Liebenburg — Song Lin —
Brian & Claire Makare — Robert Mann — Marlene McCay — Tony McClellan — Barry & Mandy Mence —
Chris Pearson — Lonnie Strickland — Irving & Yvonne Tucker — Nelda Villines