



SAVE THE ELEPHANTS – SOUTH AFRICA

soon to become



Research & Conservation

Tracking Animals for Conservation Early Dry Season Elephant Tracking Report No. 20: March-May 2013

Bringing you an update of the movements of 24 collared elephants within the Associated Private Nature Reserves (APNR), Kruger National Park (KNP) and the Limpopo National Park in Mozambique (LNP).

The majority of our nine elephants collared within the Pafuri-Makuleke Concession of the Kruger National Park have moved back to the Limpopo and Luvuvhu Rivers since the flood waters have subsided. Nwambi, has however stayed south.

Within the central section of Kruger National Park; WESSA and Mighty Craic have continued to utilise the area between the Olifants and Letaba Rivers. Tussle has moved into the Shingwedzi area whilst Mac has left the Shingwedzi area arriving in the APNR for his annual musth cycle.

The twelve collared elephants within the APNR area have consistently used the four private reserves, with Charlize and Yvonne moving over a wider area than most in the past couple of months.

To help you understand the elephants and their movements the first position of the month is indicated with a diamond and the last position of the month is indicated with an elephant. Cows point to the left and bulls point to the right.

We hope you enjoy this latest report.
STE-SA soon to become Elephants Alive

Report prepared by Amy Clark

P.O. Box 960 Hoedspruit 1380 Tel: +27 (0)15 7930369

www.savetheelephants.org



Save the Elephants – South Africa



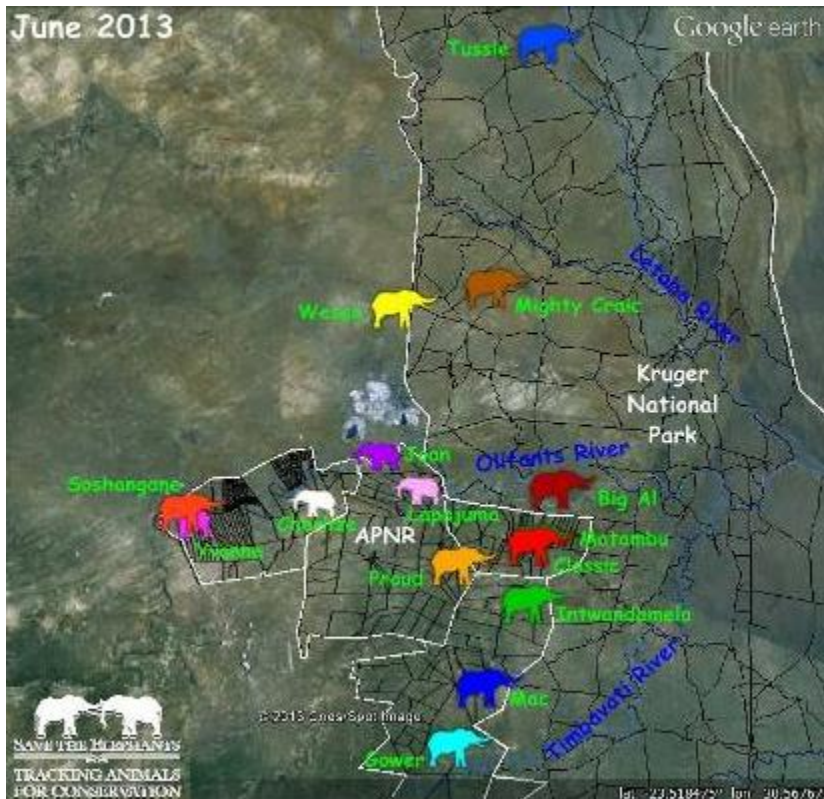


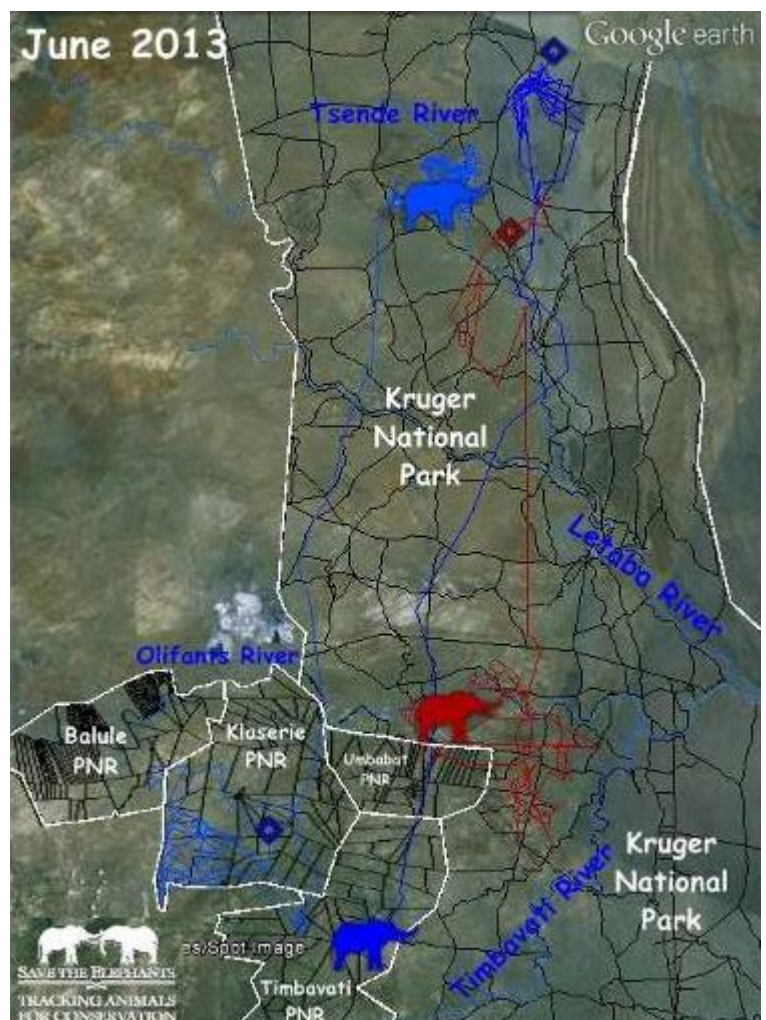
Figure 1: Positions of the Elephants in the APNR

Figure 2: Tussle (Light blue), Mac (Dark blue) & Big Al (Maroon)

We last saw Tussle in the APNR on the 26th February in the first stages of his musth cycle, since then he headed north into the Kruger National Park where he has spent the last couple of months along the Tsende River.

Big Al, after time along the Tsende River travelled south back to our main study area, spending most of his time within the vicinity of the Olifants River.

Mac began his journey south on the 14th May reaching the APNR on the 26th May, travelling over 100km in 12 days to reach the breeding herds within the Greater Kruger Area.



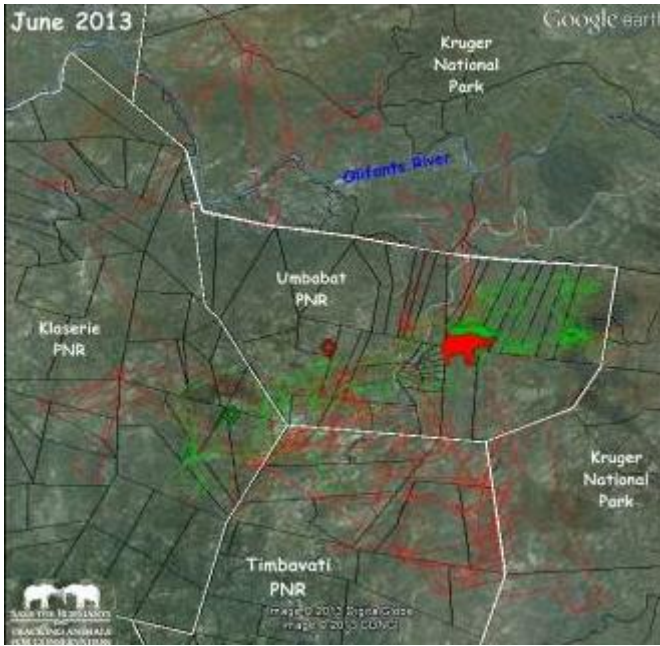


Figure 3: Classic (Red) & Matambu (Green)

Classic has also been in musth since the 26th February. We have seen him in the field four times since he started his cycle. As you can see from his tracks during this time he covered a very large area in search of breeding herds and receptive females.

Matambu has stayed consistent with his movements over the last three months, spending the majority of his time within Umbabat Private Nature Reserve.

Figure 4: Gower

Gower also spent the majority of his time within Umbabat Private Nature Reserve until the beginning of May when he started his musth cycle. Since then he has covered most of Timbavati Private Nature Reserve.

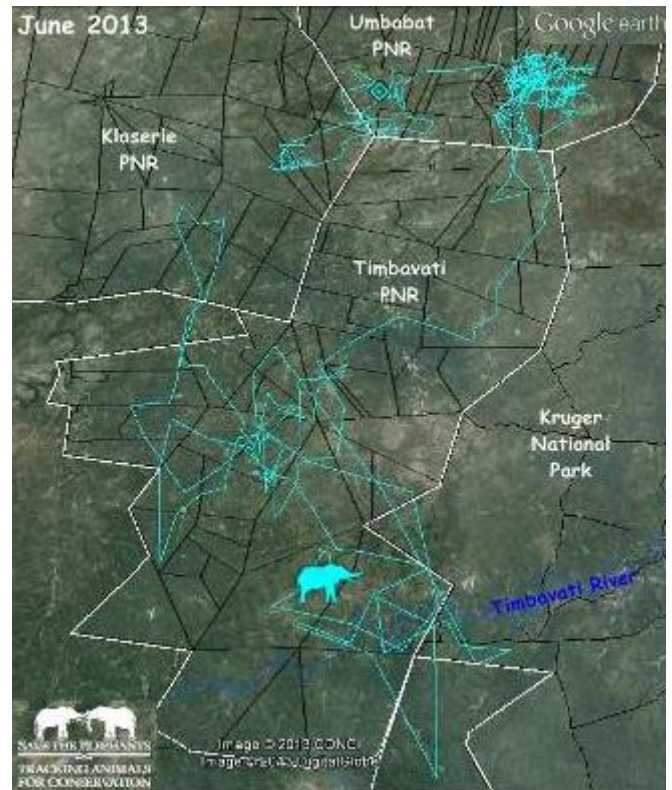
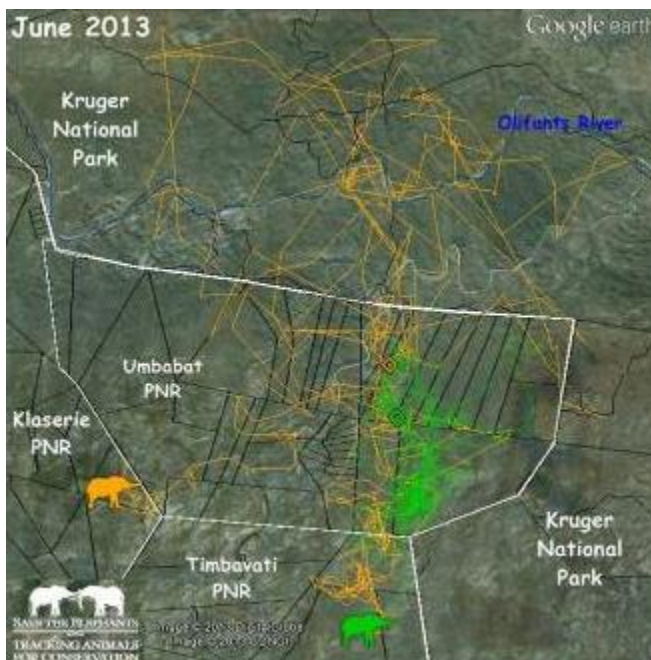


Figure 5: Proud (Orange) & Intwandamela (Green)

Umbabat Private Nature Reserve has largely been home to Intwandamela since our last report.

Proud was in musth at the beginning of the year, leading him to wide spread movements in the Kruger National Park.



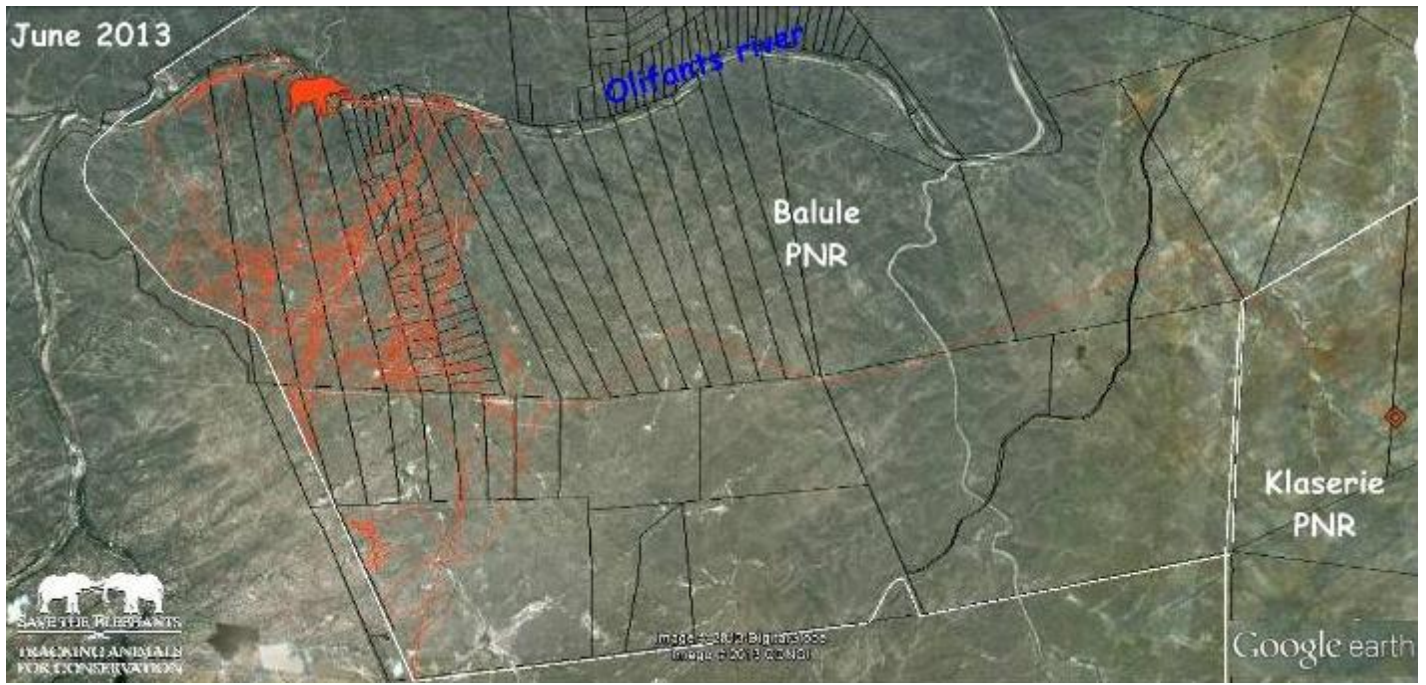


Figure 6: Soshangane

Soshangane, upon leaving Klaserie Private Nature Reserve moved straight back towards his area of choice in the western section of Balule Private Nature Reserve where he has continued to roam for the last few months. With our office now being based in Balule PNR, we have experienced more sightings of Soshangane on a number of occasions. A few of these sightings have been in our backyard!

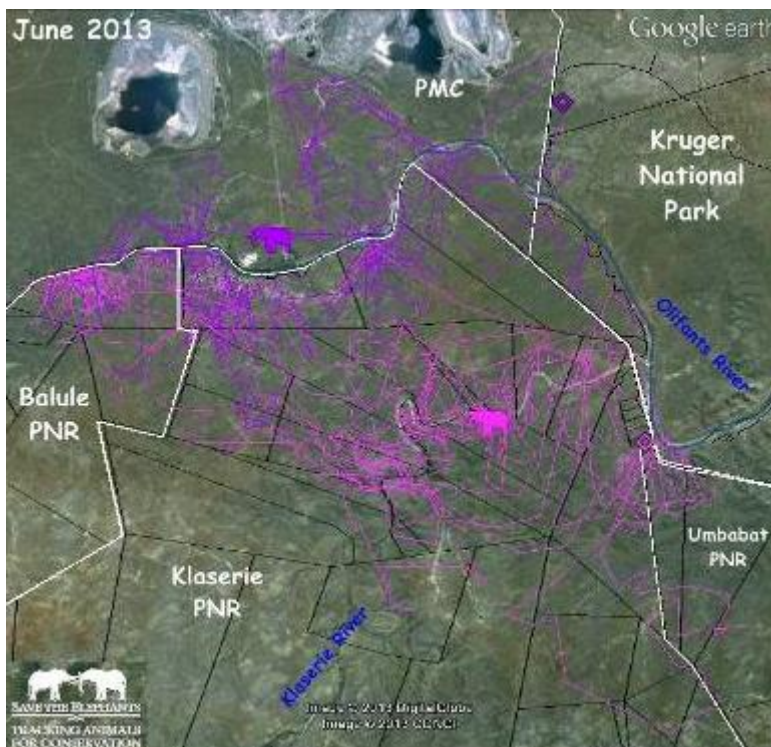


Figure 7: Joan (Purple) & Lapajuma (Pink)

Both Lapajuma and Joan have spent the past three months not venturing far from their area of choice.

Joan spent the majority of her time within the Phalaborwa Mining Company whilst Lapajuma has spent the majority of her time along the Klaserie River.

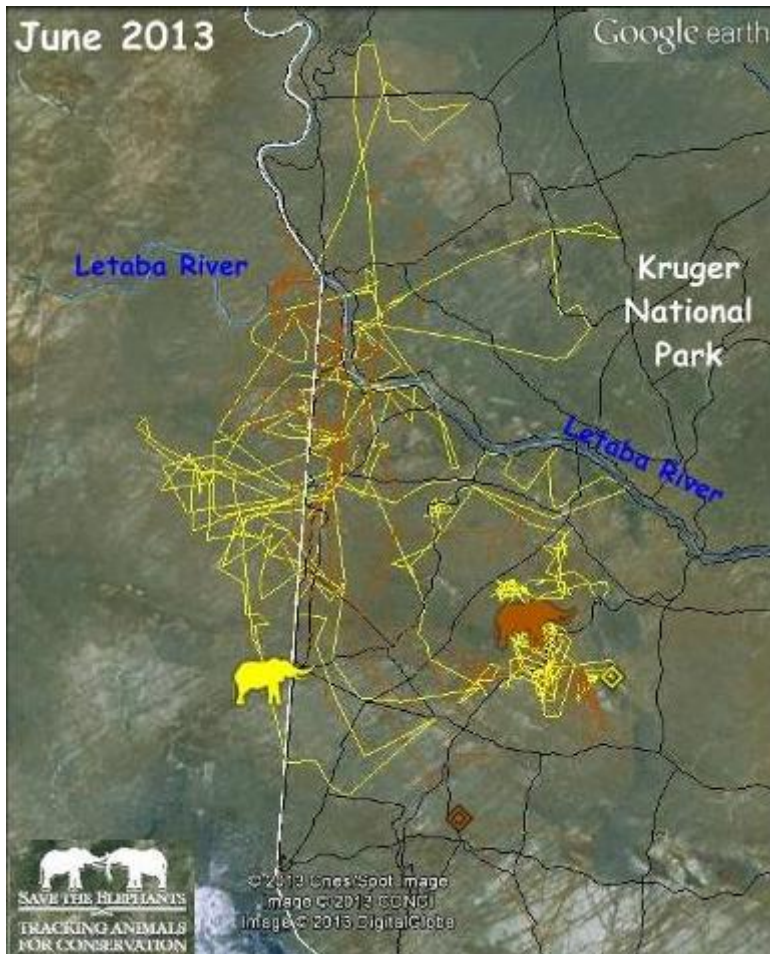


Figure 8: WESSA (Yellow) & Mighty Craic (Brown)

WESSA and Mighty Craic have continued to cover the same area over the past three months.

The area where they have both been crossing the Kruger National Park boundary leads into Great Letaba Ranch.

Figure 9: Yvonne (Pink) & Charlize (White)

Charlize has started to move away from her usual area, venturing south through Klaserie Private Nature and for a short while as far as Timbavati Private Nature Reserve. These are the first extensive movements we have seen her make away since her collaring operation mid-last year.



Yvonne has moved back into the Balule PNR for the first time this year. She has spent the majority of her time north of the Olifants River until recently crossing into the western section of Balule PNR.

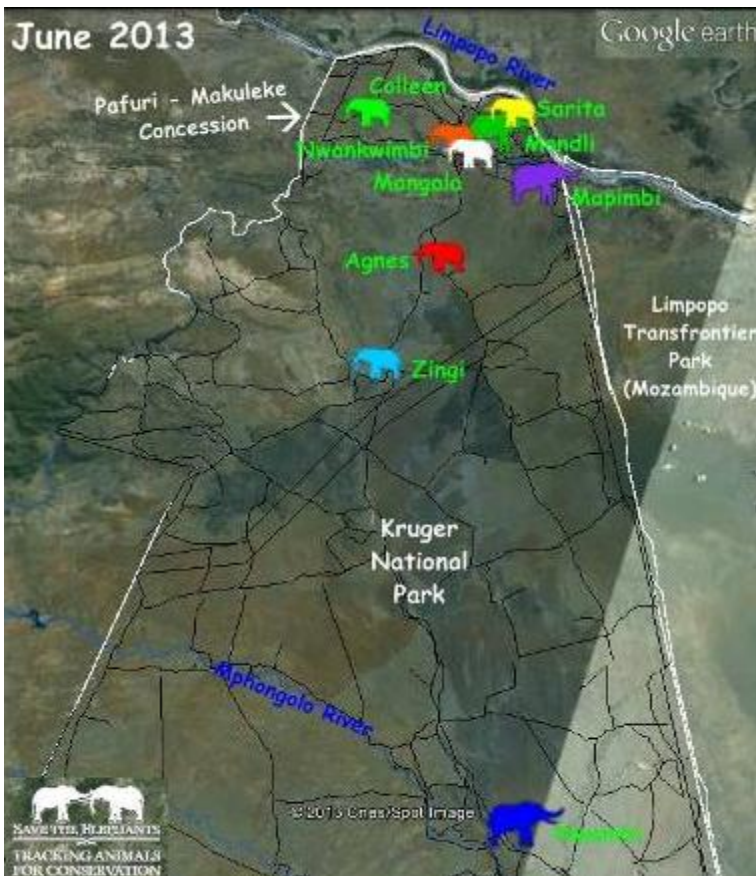
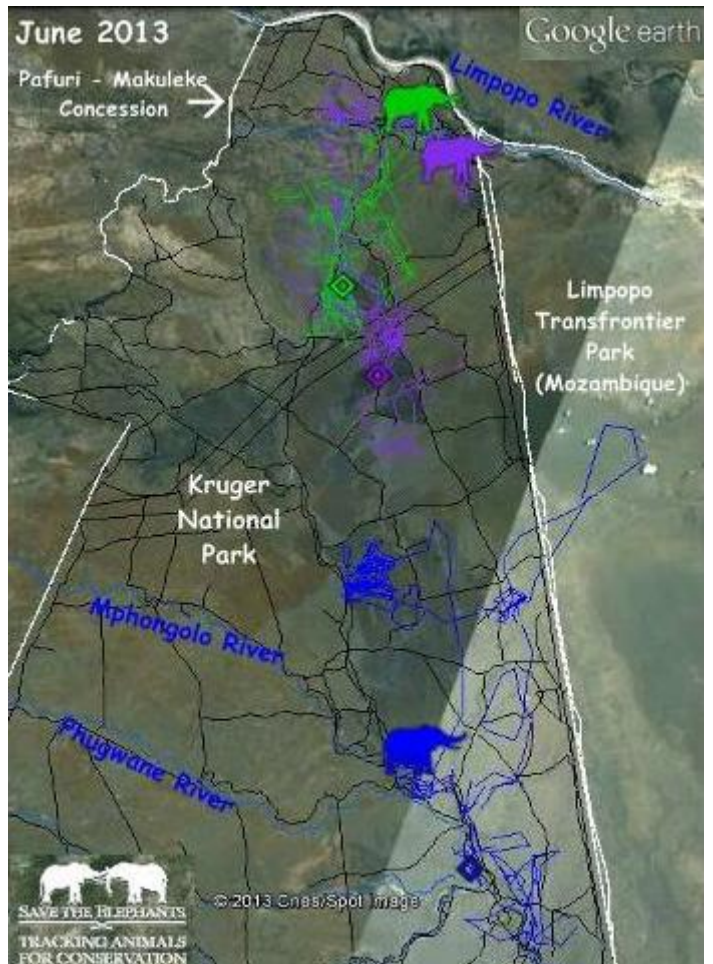


Figure 10: Positions of the Elephants in Northern Kruger National Park (Pafuri–Makuleke Concession)

Figure 11: Pafuri Bulls – Mondli (Green), Mapimbi (Purple) & Nwambi (Blue)

As you can see from the tracks shown Mondli and Mapimbi have spent the majority of their time staying within the northern section of the Kruger National Park and along the Luvuvhu River.

Nwambi spent the majority of his time along the Mphongolo River other than a short trip he took into the Limpopo National Park (Mozambique)



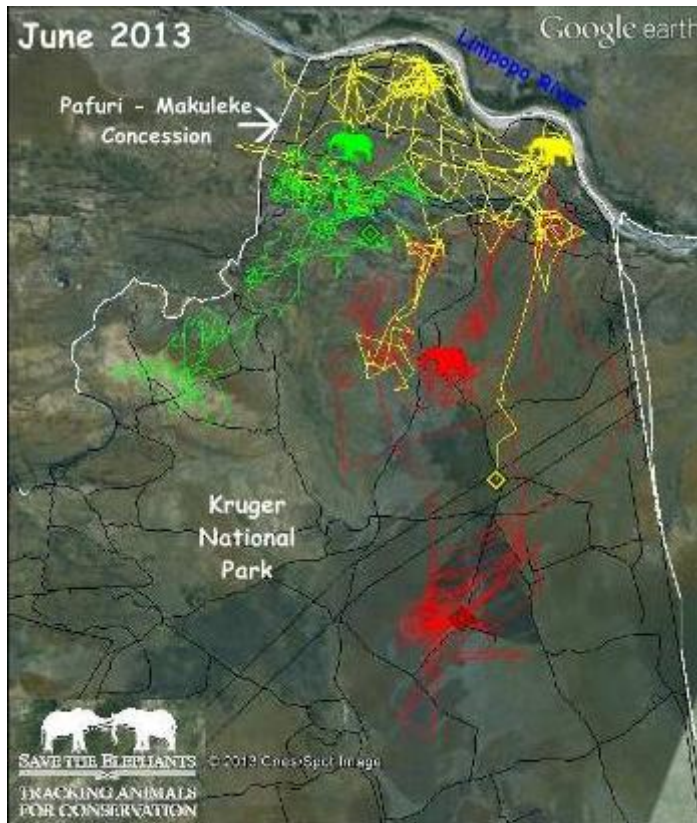


Figure 12: Pafuri Cows – Colleen (Green), Sarita (Yellow) & Agnes (Red)

Sarita spent the majority of her time between the Luvuvhu River and the Limpopo River.

Colleen also spent the majority of her time between the two rivers after moving north from the Punda Maria area.

Agnes covered a wider area in the last few months having spent more time further south than Colleen and Sarita.

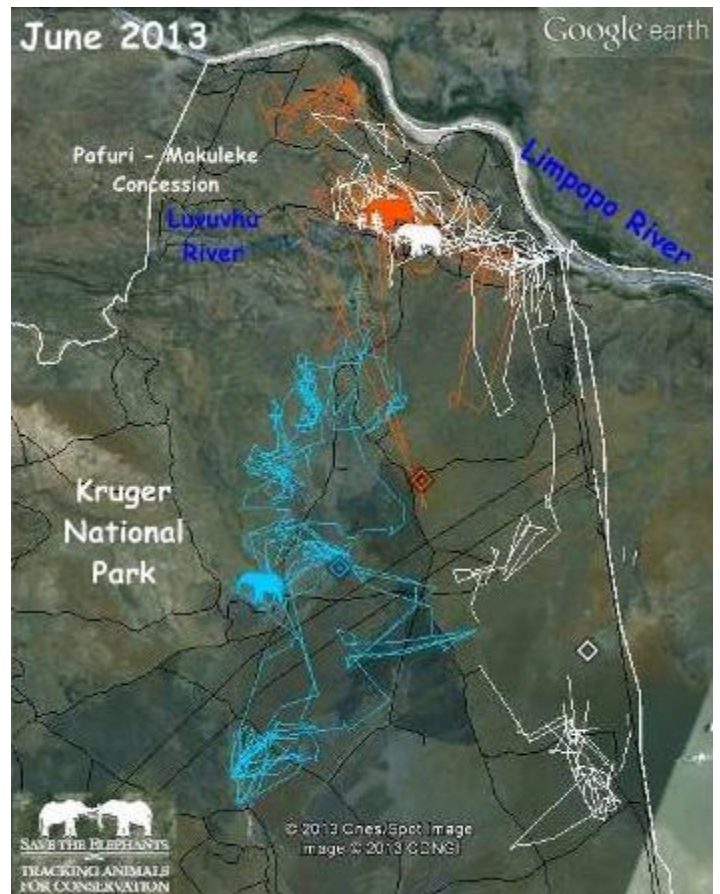


Figure 13: Pafuri Cows – Zingi (Blue), Mangala (White) & Nwankwimbi (Orange)

Zingi has stayed south of the Pafuri-Makuleke Concession. Mangala left the south and returned to the north where she spent the majority of her time sharing the same areas as Nwankwimbi along the Luvuvhu River.

A special word of thanks to the following individuals who have kindly donated collars:

Stefan Breuer — Jerry & Madeleine Cohen — Joubert De Lange — Phyllis Gower

Martin & Sophie Haupt — Charlie Irish — Bruce Jenkins — Andreas Liebenburg — Brian & Claire Makare

Robert Mann — Marlene McCay — Tony McClellan — Barry & Mandy Mence

Chris Pearson — Lonnie Strickland — Irving & Yvonne Tucker — Nelda Villines — Song Lin